



39 Acorn Avenue

Giltbrook NG16 2UF

Offers in excess of £240,000



39 Acorn Avenue

Giltbrook NG16 2UF

****Spacious Modern Family Home in Sought-After Giltbrook****

Discover this beautifully presented three-bedroom family home located in the desirable area of Giltbrook. Offering a perfect blend of comfort and convenience, this spacious and immaculate property is ideally situated close to local amenities and excellent road links.

The property features a generous living room, a modern immaculate breakfast kitchen, a charming conservatory. Additionally, a practical utility room. Upstairs, you'll find three bedrooms and a modern family bathroom.

Outside, enjoy a private, south-facing rear garden ideal for outdoor relaxation and entertaining. The property also benefits from off-road parking and remote controlled garage to the front.

Located in a quiet, residential area, this home provides easy access to Nottingham city centre and junctions 26 and 27 of the M1, making commuting straightforward. The nearby town of Eastwood is just a short drive away, offering a range of shops, schools, and local amenities. Plus, you're conveniently close to the Ikea retail park, home to a variety of shops and dining options.

This is a fantastic opportunity to acquire a spacious family home in a highly sought-after location offered to the market with no upward chain.





Entrance Hall

Enter via double glazed Composite door into hallway, alarm keypad, stairs to first floor, vertical radiator, wooden flooring & wooden door into lounge.

Lounge

18'4" x 12'7" (5.59m x 3.84m)

Double glazed window to the front elevation, two radiators, under stairs cupboard, Openreach point, Virgin TV point, fitted carpet & wooden door to kitchen.

Breakfast Kitchen

12'7" x 9'10" (3.84m x 3.00m)

Fitted with a wind range of wall and base gloss units in Taupe with large pan drawers, wood effect laminate worktop, tiled surround, stainless steel sink & drainer with mixer tap, Lamona built in electric oven Microwave & induction hob with extractor fan over, built-in dishwasher, fridge & freezer, radiator & laminate flooring, two double glazed windows to the rear elevation, double glazed door to the rear elevation.



Conservatory

10'8" x 8'4" (3.25m x 2.54m)

Double glazed conservatory with UPVC roof, light & power, fan ceiling light, radiator, wooden flooring & French doors to the rear garden.



First Floor Landing

Carpeted staircase to first floor landing, doors off, loft hatch, part boarded loft with power & combi boiler.

Bedroom One

12'8" x 8'1 min widens to 10'8"max (3.86m x 2.46m min widens to 3.25mmax)

Two double glazed windows to the front elevation, cupboard with shelves, radiator & fitted carpet.

Bedroom Two

11'4" x 5'8"min widens to 6'7 max (3.45m x 1.73mmin widens to 2.01m max)

Double glazed window to the rear elevation, radiator & fitted carpet.

Bedroom Three

6'10" x 5'5" min widens to 9'11 max (2.08m x 1.65m min widens to 3.02m max)

Double glazed window to the rear elevation, radiator & fitted carpet.



Bathroom

6'7" x 5'9" (2.01m x 1.75m)

Three piece suite comprising: panelled bath with electric shower over, low flush WC, vanity wash hand basin, part tiled walls, radiator & tiled flooring, frosted double glazed window to the side elevation.

Utility Room

6'8" x 7'0" (2.03m x 2.13m)

Double glazed door & window to the rear elevation, wall & base units, plumbed for washing machine, cupboard housing electric meter & laminate flooring, door to garage.

Garage

18'7" x 7'8" (5.66m x 2.34m)

Electric and remote controlled roller door, light and power, gas meter, pitched roof with some storage space.

Outside

Frontage

Lawn frontage & paved path to the front door, driveway to garage with electric remote controlled door.

Rear Garden

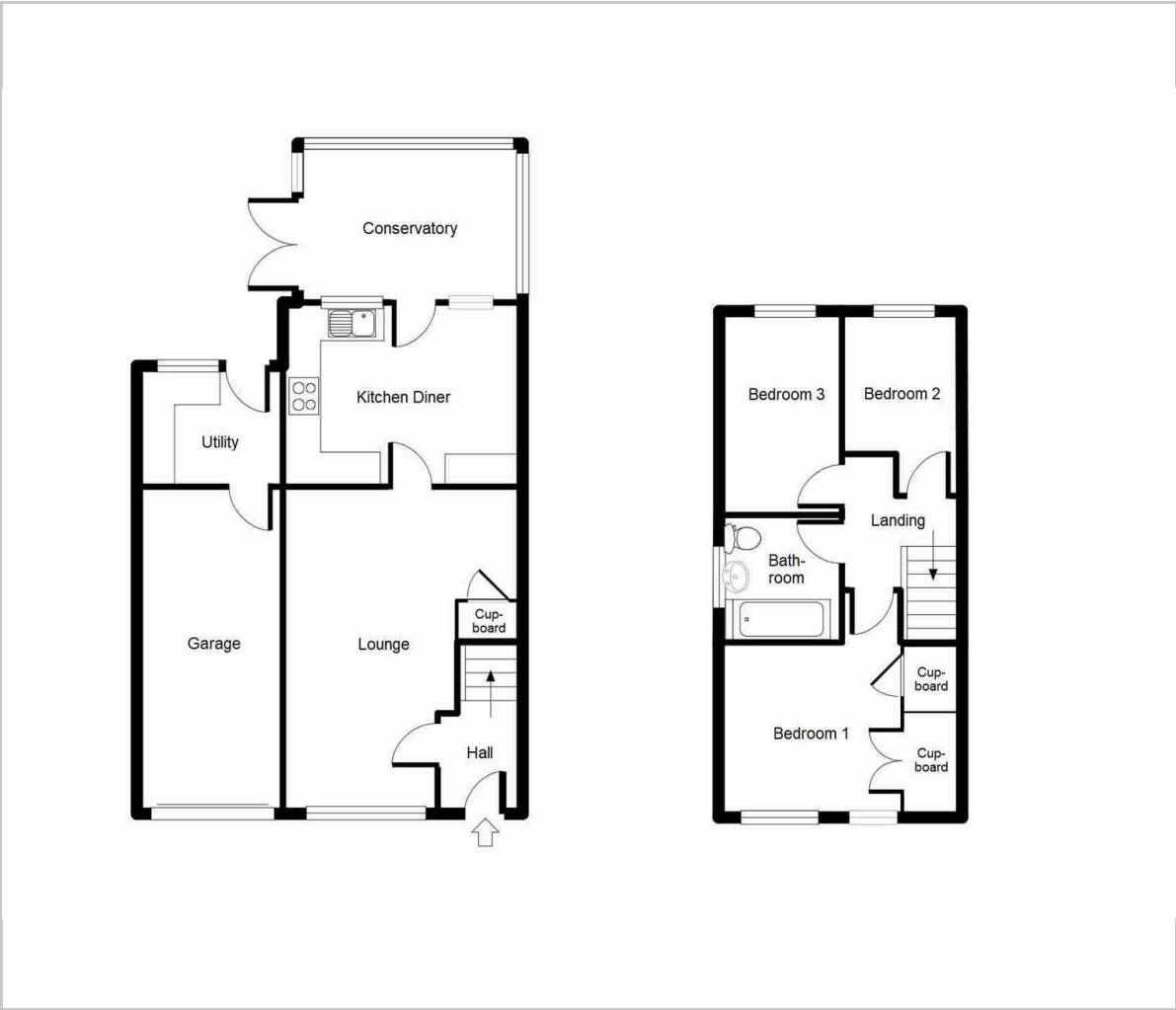
A lovely south-facing rear garden featuring a stylish block-paved pathway, lawn area, and two decking areas. The garden is enclosed with a privacy fence, creating a perfect outdoor space for relaxation and entertainment.

Council Tax Band

Council Tax Band: B



Floor Plan



Viewing

Please contact our Eastwood Office on 01773 535535 if you wish to arrange a viewing appointment for this property or require further information.

These particulars, whilst believed to be accurate are set out as a general outline only for guidance and do not constitute any part of an offer or contract. Intending purchasers should not rely on them as statements of representation of fact, but must satisfy themselves by inspection or otherwise as to their accuracy. No person in this firms employment has the authority to make or give any representation or warranty in respect of the property.

2 Alexandra Street, Eastwood, Nottinghamshire, NG16 3BD
Tel: 01773 535535 Email: property@charlesnewton.co.uk www.charlesnewton.co.uk

Area Map



Energy Efficiency Graph

